

Middlefield *Mirror*

Spring Edition 2013



Featured in
this issue

Youth Project
Winter Fun

Nursery News
Busy Bee's

Arts Development
Creative Communities

Under Occupancy
The impact

Middlefield *Mirror*

Spring Edition 2013

Contents

3	Peep
4&5	Busy Bee Nursery
6	Northfield Academy
7	Middlefield Parish Church
8&9	Middlefield Community Project
10&11	Middlefield Youth Project
12	Arts Development
13	Local News
14	SHMU
15	Home Start
16	Fuel Direct



Editorial

Welcome to the long-awaited Spring edition of the Middlefield Mirror.

As ever, thanks go to all those who have submitted content and supported the development of this publication. Middlefield Mirror is your magazine and has the potential to be a real voice in your community.

But this cannot happen without your input – we need people of all ages to get involved with the editorial team. This may involve attending meetings whenever you can, helping source content and proofing the magazine. Training can be provided.

Alternatively, if you are a budding photographer or keen creative writer, we'd love to hear from you!

If you would like to get involved and live in Middlefield, please contact Mary Clare: maryclare@shmu.org.uk or 01224515013



FUNDED BY





Manor Park PEEP Group

Do you live in the Middlefield area and have a child under three years old? Then you're lucky enough to be able to attend Manor Park's PEEP Group.

PEEP sessions supports families with their children's early stages of learning in a fun and relaxed way with activities including songs, games and story time. As well as supplying lots of fun activities for the children there is time for parents to discuss any problems they might be having with other members who can give them advice from their own past experiences.

Another important aspect of PEEP group is the Lending Library which allows parents to borrow books, play packs and toys. This means children get access to all sorts of materials and parents don't have to spend a fortune on toys.

Jody, Vicky and Gemma have been coming to Manor Park PEEP Group since last summer and really enjoy it.

Gemma said: "I was working before but now that I have got time with Ben it is better." The group starts with a "hello"

song where all the children and parents are introduced and welcomed individually then moves on to the song band where the children are encouraged to join in with the actions.

After the song band the session moved on to using play dough to make different shapes. They were given corks, sticks and shells to make shapes with and Amy managed to make a snowman.

Something most parents will love about PEEP group is the fact that it encourages the kids to tidy up after themselves so after every activity they have to put their toys away.

Susan said: "Amy has really come out of her shell since she started coming to PEEP group. She is the only girl in the group of boys."

The children are also supplied with everyday objects like hair rollers and soft balls which everyone had great fun with. They are also given boxes and bags which they can pack stuff in to. Susan and Carol said the main focus of this activity is so the children make their own choices by exploring

and experimenting.

Jody said: "I was keen to get involved because I have older children so when Carson was on the go I asked about getting involved with PEEP group." She added: "It's good fun to have with the little ones." After all the different play activities the children wind down with a story time and a few more songs. The children are encouraged to take their own books in and share with the rest of the group.

The last song is a "goodbye" song which says goodbye to each child and parent to emphasise a sense of belonging within the group.

Susan and Carol run the group which lasts for an hour between 1:30pm and 2:30pm at Manor Park Community Annexe. The Manor Park group works with one to two year olds and normally has about seven members but there are still spaces available so if you're interested in coming along you can phone Manor Park Community Annexe on 01224 812073.

Busy Bee Nursery



Circle of Security

Middlefield Community Project - Feb 2013

Parents and carers at Middlefield Community Project now have the opportunity to take part in a new eight week course called 'Circle of Security'. The course looks at what children need to feel secure in their lives and how they can be helped to achieve it. Through watching and discussing a series of DVD clips of real life male and female parents and children interacting, parents and carers gain a greater understanding of how to respond positively to their children.

Parents who have already attended the course have said that it has definitely improved their understanding of their children's needs and has helped them to meet these needs.

If you live in Middlefield and would like to attend a Circle of Security Group please drop in or call the Project on 697000. Crèche places may be available and the course is free of charge.

3, 2, 1 - Blast Off!

Over the past couple of weeks in the Busy Bee's Nursery the children have demonstrated a big interest in learning about space. The interest started from a fact book about space that we had in our story corner. Using the Curriculum for Excellence, staff have worked with the children's interest about space and with children's help we have planned a variety of activities for them to learn about space.

We have turned our role-play room into space and we made paper mache planets, used card board boxes to make

spaceships, and made rockets using plastic bottles. We have had great fun playing in our space room with children taking on the role of an astronaut or working in the control room to launch the rockets and we have even had aliens!

Through the use of the internet and books children have learnt about the different planets and a bit about how the solar system works and we even researched about meteor that came close to earth and made Russia shake on Friday 15th February 2013. We have started a floor book about space with all our findings and things we have learnt. The children expressed a lot of interest and enjoyment using the different resources. Busy Bee nursery staff and children.





My Project Journey

My name is Charlene Kellar and I would like to share my experience with the Middlefield Community Project. The first time I went to the Project was to attend a Parent and Toddler group with my son who was 18 months old at the time. The Project Co-ordinator was there that day and I asked about what happens at the Project and what other services are available. Helen said that if I was interested I could attend a Management Committee meeting that night. I went to the meeting and I was co-opted on to the committee. I learnt a lot about the Project in my first few meetings - I didn't realise that the Project offered so many services, from under 5's right through to adult learning. Being a member of the committee helped me to contribute to my community and give something back. After being on the committee for a year I spoke to Helen about becoming a volunteer for the under 12's. I helped out at the P1-P3 club and the P4-P6 club which is held at the Henry Rae Centre and I helped out at the play schemes which are held during the school holidays.

During the clubs and play schemes I learnt from the staff and other volunteers about running the play scheme and the organisation that goes into it. After helping the clubs and play schemes for a few years I decided to apply to go to college to do the NC Early Education and Childcare course. I then went on to do the HNC and when I finished college I went to work in a private nursery. I enjoyed working there but my heart was always at the Project so when I heard there was a position available in the Ladybirds team I applied for the job, I was successful and I have been working at the Project for 6 months. The Ladybirds Staff and the other project staff have welcomed me into their team and their support has been valuable to me. Throughout my journey with the Project I have been given encouragement, help if needed and support to achieve my goals. Being a member of the committee and an under 12's volunteer gave me the confidence to try new things and this resulted in me having a career in childcare.

Northfield Academy

Northfield Academy Pupils working in direct collaboration with the Industry Sector

Your Future in Energy was launched the week beginning 14th January at Northfield Academy in collaboration with the Offshore Contractors' Association (OAC) and training company Atlas. This scheme highlighted the different routes into the energy industry.

As part of the transition process from S3-S4 110 pupils aged 14-15 spent a week in industry-led workshops learning about the reality of the energy workplace. The companies involved set out the types of jobs on offer and the

skills required to fulfil these.

This was the first time that experts spanning the education sector, energy sector and training bodies came together to map where the skills shortage lay, which skills were needed to fulfil these roles, and which school subjects were needed to steer pupils towards achieving these.

This programme was received very positively by our pupils giving comments like, "It was great to learn about the different jobs available on our doorstep", and, "I am now looking at taking subjects that will help me get a job there."



The Jasmine Charity Challenge

Seven senior students are participating in the Jasmine Charity Challenge. This is an exciting opportunity to take part in an initiative that brings schools, charities, businesses and communities together. This year, the group is working in partnership with CHAS (Children's Hospice Association Scotland). CHAS work hard to support families of terminally ill children. The senior students took part in "The Vault" where the students faced a panel of corporate judges. They gave a five minute presentation on CHAS, including a short business plan and took questions from the judges.

Eco Schools Silver Award

The Eco group have been working hard since March 2012 and as a result they have now achieved silver status for the school. This is a big achievement and every member of the group has worked hard to achieve this. The next step for the group is the green flag. This is a difficult task but they are a dedicated group so I am sure they will work away to achieve this.

Loch Eil – Outward Bound

This year's S1 Outward Bound experience at Loch Eil was our most successful (for those who made it up to Fort William before the snow arrived!). The challenge and success demonstrated by the pupils during the trip was excellent and highlighted what a valuable experience this is

for our young people. A group of S6 pupils also took part in a Senior Challenge course which developed skills relating to responsibility, confidence, decision making, leadership and problem solving. We are currently talking with Outward Bound to ensure that those who missed out due to the snow will get the opportunity to visit in the New Year.

OAP Christmas Lunch

We were delighted to support a local OAP Christmas lunch on Monday 17 December. A group of S1 pupils helped serve them lunch and chat with them about life at the Academy. This was an excellent experience which was enjoyed by all.

Middlefield Parish Church - New Beginnings

Sadly Rev Anita van der Wal left Middlefield Parish Church to take up a new charge at Birse and Feughside. Anita was inducted into her new charge on the 14th of March 2013.

Anita was our minister for four and a half years and did an incredible amount of work within that space of time. Anita thoroughly enjoyed her time working with the children at both Bramble Brae and Manor Park schools where she was their Chaplain. She enjoyed going round visiting the housebound who weren't able to come to church she was such an inspiration and a delight to work with.

We miss Anita terribly but, we wish her all God's blessing on her new and fresh start at Birse. In the meantime we have Rev Manson Merchant the minister from Dyce Parish Church as our Interim Moderator who will help and guide us in the running

of our church. Hopefully by the time you are reading this article we will have managed to find a locum, someone who will be able to help with the pastoral side of things and to conduct our Sunday morning worship.

During November last year 2012, Anita set up two new adventures – a Thursday Kids Club from 5.00-6.00pm and a Bible Study Group which both are well attended and we pray that these two groups will continue to grow. If you would like to join the Kids Club simply contact Linda Forbes on 691165 or if you would like to come along to our Bible study group please contact Bertha Yakubu on 662132, we'd be delighted to hear from you. Middlefield's a Congregation who has always had great faith in the Lord and know that He will be walking alongside us, helping us to create our own new beginning.

Can you believe it's spring already? The months and seasons seem to fly by so quickly.

When spring arrives, it's a time when new life begins and exciting things begin to happen, especially when you begin to see gardens and parks come alive with snow drops and crocuses popping up through the ground after their long winters sleep giving a beautiful splash of colour. It always makes me think, "What a truly wonderful landscape gardener God is". It reminds us also when Jesus came alive again, another new beginning in the hope that all you have to do is to simply open up your heart and invite Him into your life. Will you at least think about it?

Every blessing
Linda Forbes, Session Clerk

Aberdeen community safety partnership Wheelie bin Initiative

In conjunction with Aberdeen community safety partnership, Grampian fire and rescue have produced a sticker to be distributed to home owners and tenants across the city.

Wilful wheelie bin fires are an inherent problem for fire-fighters as time spent dealing with wilful fires, tie up fire crews who could be utilised at other emergencies. Wilful fires in the Middlefield area have risen dramatically from the start of the year.

We advise that you keep your wheelie bin away from the contact of your property and to put your wheelie bin out on the morning of collection, preferably not before 7am.

The wheelie bin stickers will be issued over the next month, they will be delivered with instructions and advice on the envelope. We encourage you to adhere to the advice and apply the sticker to your bin.

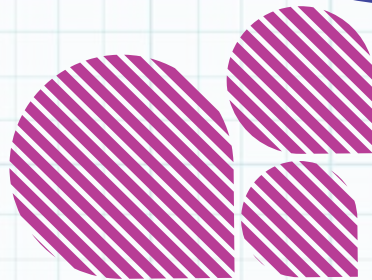


Middlefield Community Project

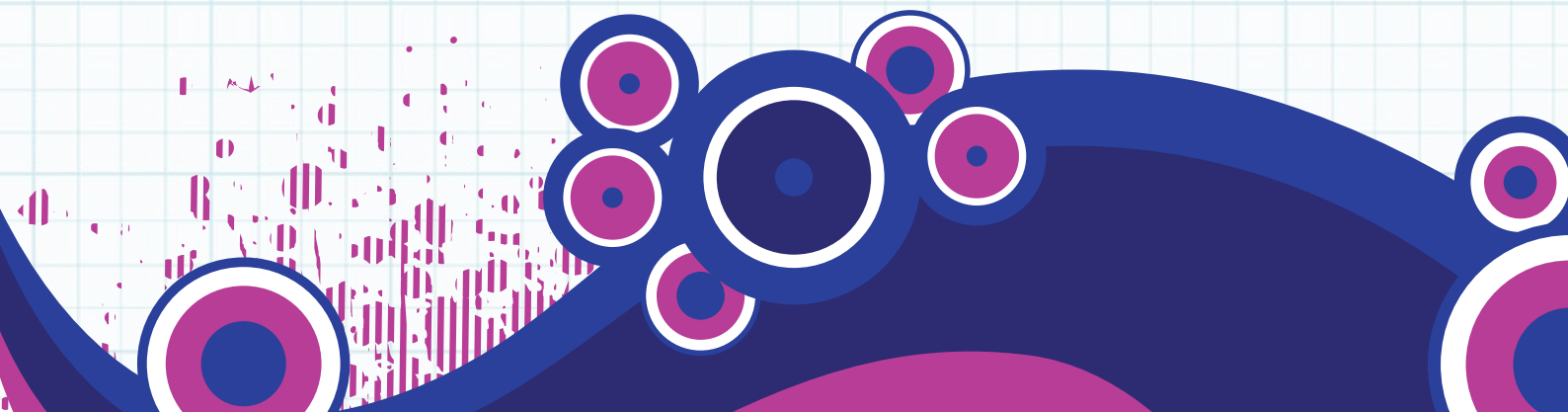
Volunteering and under 12's work

I am glad to say that we have once again received funding for our under 12's work and supporting volunteers from Fairer Scotland Fund and would like to thank the board for continuing to support the work of the volunteers and staff. We have a play scheme grant from ACC and we get donations from Khyber Pass Association for a trip every summer.

Groups at the Henry Rae Centre: Primary 1-3's (Monday 3.15pm to 4.45pm) Henry Rae Centre Primary 4-6's (Thursday 3.30pm to 5pm)



If you live in the Middlefield Area and would like to come along to the groups either come up with parent so can fill in consent forms or contact Helen and come along and join the fun.





Hopscotch Holiday

Thank you to Hopscotch for a lovely holiday that 12 children had at Arvulin. We also want to say thank you to the staff (Sharon, Siobhan & Helen) who did all the caring and cooking for the children while they were away. The children had a great time and were given the chance to sit on the captain seat and drive the boat.



Xmas Party

We had an amazing volunteers Xmas party which was funded by the ACC festive fund.

The volunteers joined the Fersands bring a party to a party and feedback was that everyone had a great night.

I would like to say a big thank you to everyone especially for all the hard work and commitment that you give to making sure clubs, playschemes all run well and for making sure that all the children had a great time.

I would also like to wish the volunteers that have now moved due to work or studying the best of luck with their chosen paths. We will miss you all!

Volunteers

I would like to thank all the volunteers for attending planning meetings, doing leafleting and the registration and the play scheme. Without them we would not be able to have the playschemes. If you would like to help out at the play scheme then please contact Helen so she can have a chat, introduce you to the project, go over the policies and procedures and send away the Disclosure Scotland.

Volunteers comment:
The Children get to go to clubs and play scheme and volunteers get experience of working with children whilst also getting involved in the planning and decision making for the playschemes.

Volunteers also got the opportunity to do training and also got the chance to get together with other volunteers at the end of play schemes. The experience has

built up my confidence and I'm working towards going to college or work. It's a great opportunity and you can get references from staff members at the Project.

Volunteers residential: This year 10 volunteers went to have a look at Glasgow Science Centre and Livingstone Park to see if these would be suitable for the playscheme trips. The volunteers that went on the trip felt it was great to get away for a night and to get to know some of the other volunteers.



MIDDLEFIELD Y

STUDENT PLACEMENT

My name is Lisa and I am currently in my 2nd year studying Social Work at Robert Gordon University. For my 1st placement, I have been lucky enough to be based at the Youth Flat which has been a great opportunity for me. I was a bit nervous when I began as I have never worked with young people before and was unsure what to expect, however I have found being at the flat to be a fantastic opportunity. It has given me the chance to really improve my confidence when working with young people, as well as my pool skills!

While here, I have had the opportunity to participate in a number of activities, such as swimming, arts and crafts and researching a trip to Poland for some of the older teenagers. I feel that the youth flat has been a fantastic opportunity for me and I have thoroughly enjoyed my time here. Although I am incredibly sad to be leaving, I hope to be able to visit and catch up with the young people I have worked with.



"Keeps me off the streets"

Connor Wat
age 16



CHRISTMAS MEAL

Twelve members of the older season from the flat enjoyed a three course meal at the Broadstraiks Inn, Elrick. It was a great afternoon with everyone making an effort and getting dressed up for the occasion! The meal was funded by the community group festive fund and 612 Social Club. Thanks to the members of the 612 Club who donate to our youth flat regularly.

"I use it to socialise"

James - age 17

OUTH PROJECT

MIDDLEFIELD MUSIC

All the Middlefield young musicians are encouraged to play together in a band. These young people will get help with song writing, musical arrangements, vocal harmonies, advice on publicity, handling live shows, stage presence, recording and many other aspects of the music industry.

We have 6 regular players and a few at early stages of learning. These young ones are aged 11 to 14 years old. This group have done some informal percussion workshops. Most of this age group have tried guitar and some are interested in doing some singing and keyboard work. They come to a session at 4.30 to 6pm. We are encouraging them to attend more frequently and hopefully we will have yet another band coming out of The Middlefield Youth Flat.

We have 4 regular players who have formed a band - Alex on guitar, Nick on drums, Mel singing and Kim, a new singer who is interested in working with them. They are aged between 16 and 20 years old. This group have been doing work at Northfield Community Centre on a Monday evening (thanks go to Northfield for the space). These guys need a rehearsal space and regular input to achieve and focus on what they want to do. The girls are both keen song writers and have a growing catalogue of songs and musical arrangements.

These young people would benefit from a dedicated room they could rehearse and work on music with equipment close to hand.

For more details contact Mike, Charlie or Sharon at Middlefield Youth Flatt. 01224 687362

SWIMMING GROUP

The swimming group is going really well at the moment. Numbers have risen from eight to eighteen!

We have a number of children who are all at different levels with their swimming and are growing with confidence each week.

JOHN LEWIS

A big thank you to John Lewis for the generous donation to the Community Matters fund.

Thank you to the Bethany Christian Trust for the donation of our Christmas tree. Lord Provost George Adam, Councillor Ross Grant and Jackie Dunbar were present for the decorating of the tree. The young people also enjoyed trying on the Lord Provosts chain.

Also we would like to thanks the stores Sainsbury's and Asda at the beach who have allowed us to bag pack to raise funds for the flat.

"Its fun"

Nicky - age 12



Creative Communities Capturing Middlefield



Click, flash, say cheese, “oh I think your eyes closed that time” develop, print, frame!

There has been much clicking, flashing and exposing in Middlefield but no need to call the police. All this has been caused by the arrival of the Creative Communities ‘Capturing Middlefield’ photography project.

Creative Communities is Arts Development, Aberdeen City Council’s programme of innovative arts workshops and events for residents of all ages from the City’s regeneration areas funded by the Fairer Scotland Fund. Each regeneration area has a different theme and a lead artist who has developed and delivered their part of the project.

Photographic artist Fergus Connor led the workshops and events in Middlefield starting off with a promotional Pop up art & ice cream event on Saturday 16 February 2013. During the event everyone was encouraged to customise their free ice cream to make their very own ice cream

portrait. These ice cream icons were then photographed and then quickly eaten, with the photos being displayed on the Creative Communities Facebook page.

Fergus and other arts tutors went on to deliver an exciting range of photo based workshops with all ages of the community. The Middlefield Nursery children and their parents/carers took an imaginary photographic journey to outer space. Adults and young people had the opportunity to make pin-hole cameras and develop their own photos. Fergus visited the after school club at Henry E Rae CC where the children took lots of close up photos of one another’s facial features and assembled them into a strange cubist collage. Groups of older people from the local sheltered housing complexes went hi tech with smart phone photo sessions, trying out different apps and tweeting their results.

The project culminated in an exciting exhibition at Henry E Rae CC on Saturday 23 March

2013. This showcased all the photography work produced through out the project by the different groups and gave a snapshot of Middlefield created by it residents and visitors. To see the work produced during the project please visit:

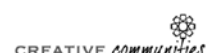
Facebook: www.facebook.com/creativecommunitiesaberdeen

Twitter: www.twitter.com/CC_Abdn

Blog: www.creativecommunitiesaberdeen.blogspot.co.uk

The Creative Communities project continues in Seaton throughout April 2013, with all workshops and events open to anyone from the City’s regeneration areas.

If you are interested in taking part please contact Arts Development to find out more on **01224 814740** or email artsdevelopment@aberdeencity.gov.uk.



Under Occupancy

And the impact on Housing Benefit entitlement

From April 2013 many working age tenants in social rented housing who claim housing benefit will be affected by a change in how their benefit will be calculated. From that date housing benefit will only be paid to cover the number of bedrooms the household require. However, tenants who have reached Pension Credit age will not be affected.

The size criteria in the social rented sector will allow one bedroom for, each couple or single parent, any other person aged 16 or over, two children of the same sex aged under 16, two children aged under 10 regardless of their sex, any other child (other than a foster child or child whose main home is elsewhere and a carer (or team of carers) who do not live with the claimant and/or partner to provide regular overnight care.

Tenants who occupy a property which is one bedroom more than required will see the eligible rent used to calculate their entitlement reduce by 14%. Those tenants occupying two or more bedrooms than they require will see the eligible rent used to calculate their entitlement by 25%. The tenant will be required to meet the shortfall in their award to prevent falling in to rent arrears.

The type of tenants who will be affected include separated families where the parent requires a spare room for the children to visit or stay at weekends, the parents of foster children, disabled tenants – including where the property has been adapted or purpose built and tenants who are waiting for a move to a smaller property.

Aberdeen City Council will provide a Discretionary Housing Payment scheme. Application forms are available at council housing offices.

There will be high demand and pressure on the scheme and disabled people living in significantly adapted accommodation and foster carers, whose housing benefit is reduced because of a bedroom being used by, or kept free for, foster children have been identified as a priority.

Given that the scheme is budget limited there is no guarantee that a claimant will receive a payment from the scheme.

Any tenant affected by a loss in housing benefit due to the under occupancy rules should make contact with their landlord to discuss their individual situation especially if the reduction is causing them to fall in to rent arrears.

Aberdeen City Council will provide a Discretionary Housing Payment scheme. Application forms are available at council housing offices.

Pathways

The Welfare Reform benefit changes are beginning to take effect on the communities, with many people now being assessed as fit for work. If you are one of the people currently affected by the changes and are concerned about how you will manage to find work then support is available through Pathways.

If you are looking for help then you can contact Pathways on 682939. A Keyworker will then help you with whatever support you need, from giving advice on suitable employment, through making a CV, to help with job search and preparing for interviews. The Keyworker will also help with anything else that might stop you from being able to work, including identifying more specialist support you might need.

Anyone can receive support to get back to work – or even to change jobs if you don't like the job you have.

One lone parent with a young son came to Pathways for help after being out of work for 8 years. After developing a CV which she was happy with Pathways also helped her set up an email account and to register for online applications. After Jobcentre Plus introduced the new Universal Jobmatch system for applying for jobs Pathways also helped set her up on that system.

After making a number of job applications and handing out her CV, she was successful in securing a number of interviews and is now working 16 hours per week, which suits her childcare needs perfectly.

If you would like help or advice on finding work, why not call Pathways on 682939.

SHMU SUCCESS STORY

Andy Gardiner has been a volunteer for shmuFM for 3 years working on the Middlefield Matters Show. He recently took advantage of the Job Club which was on offer for shmu volunteers. He joined a couple of other volunteers on a Wednesday afternoon at Tillydrone Youth Project to get support from Michelle, the Employability Development Worker. With Michelle he worked on updating his CV, interview skills

and job searching. After a lot of hard work and perseverance Andy secured employment with Bibby Offshore. This does of course mean we will be losing him from the radio and although sad to see him go we couldn't be happier for him. Andy said: "I'm so thankful for all your help."

Good Luck Andy!

Positive Transitions

shmuTRAIN are currently recruiting for their next Positive Transitions course. This will be the 14th time we have run our very successful employability course. The programme combines employability skills with media modules in radio and film. We use the media modules to build our trainees confidence, communication skills and research skills as well as essential team work skills. The course runs for 12 weeks and upon completion trainees achieve the SQA in Employability, within this module we cover everything you need to get a job: CV writing, interview skills and job search skills. Our course has a high success rate of getting our trainees into a positive destination of employment, college or further relevant training. If you are interested or know someone who is then contact Michelle Trail, Employability Development Worker on 01224 515 013 or michelle@shmu.org.uk



"It (the course) made me care more, I actually looked for jobs and applied."

Kyle Roth, PT11

Station House Media Unit (shmu) is situated just off Great Northern Road in the old Station House Community Centre, Woodside. We offer free access to, and training in video and radio production, and magazine and online publications to residents of all ages living in Seaton, Woodside, Middlefield, Tillydrone, Torry, Northfield and Cummings Park.



A Year in Home-Start – what a year it's been

We have just finished celebrating 25 years supporting families in the city. We offer weekly support to families who have at least one child under the age of 5 in the family's own home. Our team of amazing volunteers who are usually parents themselves offer 2-3 hours each week offering a listening ear and provide practical support and advice. Home-Start recognises that sometimes life has its challenges and difficulties and parents need a helping hand.

It has been an amazing year for us with so much happening and I thought I would like to share some of this with readers.

Our Charity Shop

We have opened our first charity shop hoping that it will help us to raise money to enable us to support more families in the city, raise awareness of the work we do and provide volunteering

opportunities for families to get some skills for work. The shop opened at 101 George Street (just across from John Lewis) on 1st November 2012. It is a lovely shop and is really busy and has been very popular. Definitely worth a visit next time anyone is in town. At the moment the shop is open Tuesday to Saturday 10am to 4pm. This will increase as we are able to get more volunteers. If anyone is interested in volunteering in the shop they could drop by and speak to Karen the shop manager or give the shop a call on 01224 622390.



Our Award

Our work was recognised by the local Trend Magazine. We won their Community Award 2012 recognising the difference we had made to the city.

We are always looking for more volunteers to help us support more families. If any reader has parenting experience and can offer 2-3 hours of their time each week to help a local families please get in touch. Our next volunteer induction course is starting in late February.

Please call us on 01224 693545 for more information or email admin@homestartaberdeen.org.uk or have a look at our website www.homestartaberdeen.org.uk

Georgette Cobban
Scheme Manager

SCARF's – Home Energy Advice Team (HEAT)

Fuel direct

What is Fuel Direct?

Fuel Direct allows you to make manageable payments directly from qualifying benefits that you may receive if you are struggling to agree or maintain an affordable payment scheme with your fuel supplier. It will help to avoid having a prepayment meter fitted to manage your ongoing consumption. Suppliers are guaranteed payments for ongoing consumption, as well as something towards the debt on the account.

So how much would be deducted from my benefits and when?

Each week a payment would be made directly to the supplier and deducted from the amount of money you receive. The set amount that is paid for debt recovery is currently £3.55. On top of this another amount would be taken each week to cover your ongoing energy

consumption, which prevents the debt on the account increasing. An example might be:

You have £200 of debt on your account and over the last 12 months you used an average of £10 of electricity each week.

Therefore you would pay each week -

£3.55 for the debt
+
£10 for on-going energy use
=
£13.55 per week

What benefits would I need to claim to be eligible for Fuel Direct?

You are only eligible for Fuel Direct if you currently receive one of the following benefits:

- Income-based Jobseekers Allowance
- Employment and Support Allowance
- Income Support
- Pensions Credit

I have a prepayment meter. Can I ask that Fuel Direct is used to cover just the debt on my account?

If you would like a prepayment meter to help manage the amount of energy you use, it is possible to still have the debt repayments paid via Fuel Direct. Prepayment meters are often set to take a weekly charge for debt on an account however it can be difficult for some consumers to keep track of how much the debt recovery charge is and when it will be deducted from the meter. Therefore in certain cases using Fuel Direct to avoid these extra debt charges will be beneficial.

If you are interested in setting up Fuel Direct or would like more information then call SCARF's – Home Energy Advice Team on 01224 213005.