

# TillyTattle

Summer 2021

Image Credit - Tillydrone Gateway Feature



## In this issue:

GATEWAY FEATURE

FIT LIKE BENCHES

TILLY FLAT

[www.shmu.org.uk/press](http://www.shmu.org.uk/press)





Summer Edition 2021

# Contents

- 3 Celebration Volunteers
- 4 Community Update
- 5 Playpark Refurb
- 6 Tetris Shoot
- 7 Community Flat
- 8&9 Tillydrone Gateway
- 10-12 UDecide
- 13 Community Update
- 14 shmu
- 15 History Page

## Welcome to your summer edition of the Tilly Tattle.

In this issue we have articles covering the new artwork which will be located at the entrance to Tillydrone after the Diamond Bridge, a piece celebrating the volunteering efforts of local people and updates from the projects granted funding from the UDecide team.

If you would like to get involved and join the editorial team or if you have ideas for the community publication, you can easily get in touch with us. The staff at **shmu** are able to support and train anyone living in the area who are interested in developing their ideas and skills in either writing, photography or proof reading. So please don't be shy, this is your magazine written, edited and designed by the good folk of Tillydrone.

If you live in the Tillydrone area and would like to come along to the editorial meetings or submit an article then get in touch with **Laura** at **shmu** on **0752586312** or you can email her on [laura.young@shmu.org.uk](mailto:laura.young@shmu.org.uk).

You can also view this magazine alongside previous editions on the **shmu** website [www.shmu.org.uk](http://www.shmu.org.uk) then click the 'PRESS' option.

Our dates for the next edition have not been set yet but keep an eye out on the Tilly Tattle Facebook page for more information coming very soon!

Tilly Tattle is a community publication and the views expressed are not necessarily those of the editorial team or of shmu. You can be reassured that our distribution company is taking every measure to ensure they are delivering your magazine safely and within government guidelines.

Supported by



# Celebrating Volunteers

Jane Fullerton

**As chair of Donside Village Community SCIO, I recently completed the annual report of activities and achievements within our community.**

As always, I stressed within my report that the most fantastic thing of all is the work being done by committed volunteers, on a regular basis, to help make our village a great place to live.

I calculated that the total amount of time in the past year, given willingly by our volunteers, amounted to 2,600 hours. This is a fantastic achievement and something we should all be proud of.

Our amazing volunteers are the ones who make it possible and ensure that we can be a real community, who care about each other and our environment. If everyone does a little and does what they can, we can all strive to make a real difference together.

The following piece was written by one of our 'core team' of volunteers, who gives up their time on a regular basis to help improve our environment (and keep our Community Hydro Scheme running smoothly).

I always love to read things that 'come from the heart' and I think

that this is a great example of someone talking about their personal experience and the benefits of volunteering.

## Sarah Jane Christine's story

Hello, I am a resident of Donside Village, a trustee of Donside Village Community SCIO and I volunteer in the village and at ACE Community Hydro Scheme (where I recently became one of the Directors). I work alongside fellow volunteers and have done various things around the area to give back to the community and help our environment. Recently I and fellow volunteers, Rick Vaughan, Clive Potter and Laura Howell undertook yet another clean of the badly polluted Grandholme Lade. We recovered a dog bed and loads of plastic bottles, cans and other litter which restricted the movement of river creatures, including six little ducklings, that we saw struggling in all the debris. It really annoys me that people drop litter and pollute the waterways and surrounding land. At the same time, it gives me great pride that we are cleaning up our wee piece of the planet, and doing our bit to make it better.

I also help out at ACE Community Hydro Scheme, regularly cleaning the otter screen which becomes clogged with branches, leaves

and other debris, and restricts the flow of water through the hydro, reducing the output of how much electricity is created. The otter screen is there to catch any large items and stop them from going over the Archimedes screw and by removing these items we can increase energy production, which is very satisfying.

We have frequently pulled out large trees (usually washed down the River Don when there is flooding), bikes, numerous plastic bottles (which all get recycled!) and other detritus. We currently are trying to remove several shopping trolleys that have become stuck in the lade!

Over the past few years I have helped plant about 2000 trees around the area to make it a greener place for everyone to live in. I also have a focus on health and safety issues with the aim of making our riverside a safer place. Along with others I regularly litter pick around the area, and recycle all of the litter I collect that can be recycled.

I want to extend a huge 'thank you' to all of our volunteers, for everything they do and the amount of their own time they give up to support their local community.





## Tillydrone Book Swap Group

A Tillydrone resident has started a local book swap group to provide a space to swap and discuss books we have been reading with other members of the community.

Lydia Potter set up the group and is also on the committee of the Earth & Worms community garden next to the pharmacy in Tillydrone, and they plan to create a 'free little library' to provide a physical space to house books that people have donated. Once this is created, the idea is to link this with the Facebook group and update the group regularly with the available donated books.

Hopefully this will help to encourage community engagement about books, will divert books that might otherwise go to landfill, and provide a calming, open air space to read and enjoy the garden at the same time.

You can join the group by searching for Tillydrone Community Book Swap on Facebook.

## Future Choices

A young person from Tillydrone is fundraising for a local charity that supports disabled people and provides opportunities for social inclusion.

Future Choices has been working in the city for over 10 years and Lucas Mackenzie, a 14 year old from Tillydrone has been volunteering with them for the last three years.

His fundraiser involves people signing up to Easy Fundraising or Amazon Smile when they shop online and selecting Future Choices as their chosen charity.

This means that whenever they shop online through these sites the companies donate a portion of the sale to that charity.

Lucas is currently logging his volunteering with Saltire Awards



and has achieved 100 hours so far as well as raising over £70 from the online shopping fundraiser.

David Forbes, Founder of Future Choices said: "The beauty of this fundraiser is that Lucas isn't asking for your money, all he is asking for you to choose Future Choices as your chosen charity on these online shopping platforms."

## Tillydrone Community Council and Earth & Worms – Bee Highway

Tillydrone Community Council and Earth & Worms have teamed up to develop the green space at the corner of Hayton Road and Tillydrone Road. Both groups had expressed an interest in making this green space more inviting and interesting for our community. We envisage a burst of colour which will brighten up the space for those staying here and also for those passing through Tilly.

We have discussed many ideas such as having raised beds, wildflowers and a natural path leading to benches made from trees grown here in Tillydrone! We also discussed the possibility of establishing fruiting shrubs and trees with the hopes to expand edible plants that residents can pick at their own leisure in the area. We have also been lucky to

have some granite available from a local business, Donview Construction.

Earth & Worms have teamed up with Aberdeen City Council to create a 'Bee Highway' stretching from Seaton up to Woodside, with this area being the heart of the network. We hope that once we have completed our work of transforming the corner, this will help encourage speeding motorists to slow down by reminding them that they are driving in a residential area.

We will of course keep you all updated via our Tillydrone Community Facebook page.

TILLYDRONE COMMUNITY COUNCIL - PLANNING OFFICER



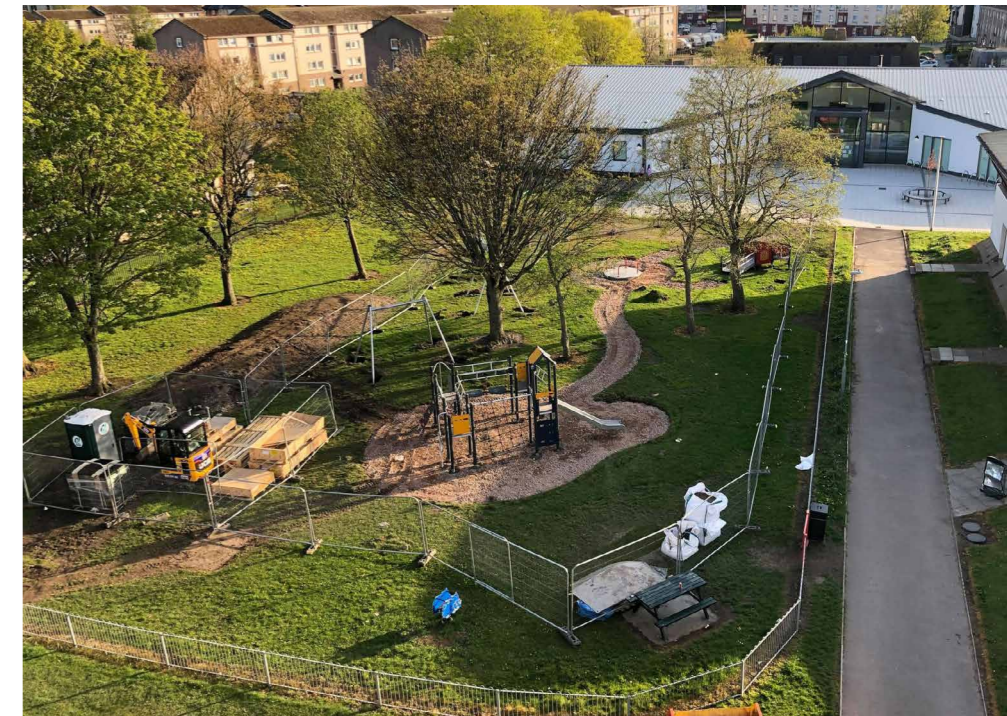
## PLAYPARK REFURBISHMENT READY FOR THE START OF SUMMER

Councillor Ross Grant

Having been asked by local residents to investigate why the old playpark behind St Georges Tillydrone Church on Hayton Road had been removed, I was advised that it was due for full a £65,000 refurbishment. This is a significant investment from the council, and it will be a significant improvement as the heart of our community continues to be transformed. Understandably, residents were left a little alarmed by the removal of the old equipment and I wanted to make sure residents were able to see the plans.

Having shared this with the Tillydrone Community Council and on my Councillor Facebook page, it was good to see a high level of response. The information had reached 2,566 people within 24 hours with positive reactions from 159 people, having been shared 12 times. There were also at least 64 comments which had all been constructive and/or positive and this feedback was relayed back to the council.

There are a number of features which are designed to be more



inclusive for children who may require a wheelchair or for any young child in a push chair too. There is also a new walkway that leads people through the park, which is another improvement on what was there previously.

In the past year, we have all come to realise just how important good outdoor spaces are to our general wellbeing and

although there were issues with the contractor, Komplan, which regrettably delayed work by about a month, work did commence at the beginning of May and the playpark was due to be ready just in time for what will hopefully be a long and sunny summer for the many families who depend upon the playpark to make the most of.





# TILLYDRONE COMMUNITY FLAT UPDATE



## Tetris Shoot

Tillydrone Avenue was transported back in time to Soviet-era Russia in late February as it became the film set for Taron Edgerton's new film, Tetris.

The movie focuses on the origin story of the video game, Tetris and is directed by Peterhead's Jon Baird.

Jon took the movie back to his home turf as he wanted to show the diversity of filming locations that the North-East had to offer.

The film will be released later on in 2021 and we can't wait to see Tillydrone's appearance on the big screen.

We're almost half way through the year already and the future is slowly beginning to look brighter for everyone with the gradual easing of restrictions, opening of shops, restaurants, pubs, gyms, cinemas and being able to meet loved ones indoors (the weather of late hasn't been very conducive to outdoor meeting!)

We're looking forward to getting everything back to normal after 21 June (all going to plan) and relaxing restrictions on numbers visiting the Flat as well as a return to five day opening, classes and groups and folk being allowed to make their own cups of tea! We're very happy that we've been able to provide face to face support in Tillydrone over the last year when so many services have been closed or operating remotely and look forward to seeing faces from other services in the area before too long.

The support we have had over the last few months has been truly remarkable. We've been able to provide food, warmth and other assistance to so many due only to

the kindness of others. The range and scope of donors has been mind boggling and includes the following organisations:

*The Seven Incorporated Trades of Aberdeen Widows Fund*

*The Crew of the Ocean Endeavour Oil Platform*

*The James Hutton Institute Social Club*

*Firpond Community of Newton Dee Village*

*The Rosicrucian Society*

*The Lord Provost's Hardship Fund*

*STV Children's Appeal*

*Fairer Aberdeen Winter Hardship Fund*

*Lurch Monster Tilly Butcher*

*Cineworld*

*Fareshare*

In addition to this, we have been overwhelmed by the generosity of so many individuals who continue

to provide donations to our food bank. Too many to mention individually here but you know who you are!

May Patterson, our complementary therapist has resumed delivery of treatments in the Flat. These include Reiki, Indian Head Massage, Reflexology and Healing and can be booked by contacting myself or Sarah.

We hope that the weather will soon improve and provide encouragement for folk to help out in the garden at the back of the building. There is plenty of space for anyone who may want to have a go at growing their own fruit, veg or flowers. Get in touch if you want to find out more.

We have some exciting plans for the future and will be delighted to welcome everyone back over the next few months!

**For more information call Fiona or Sarah on 01224 486641**

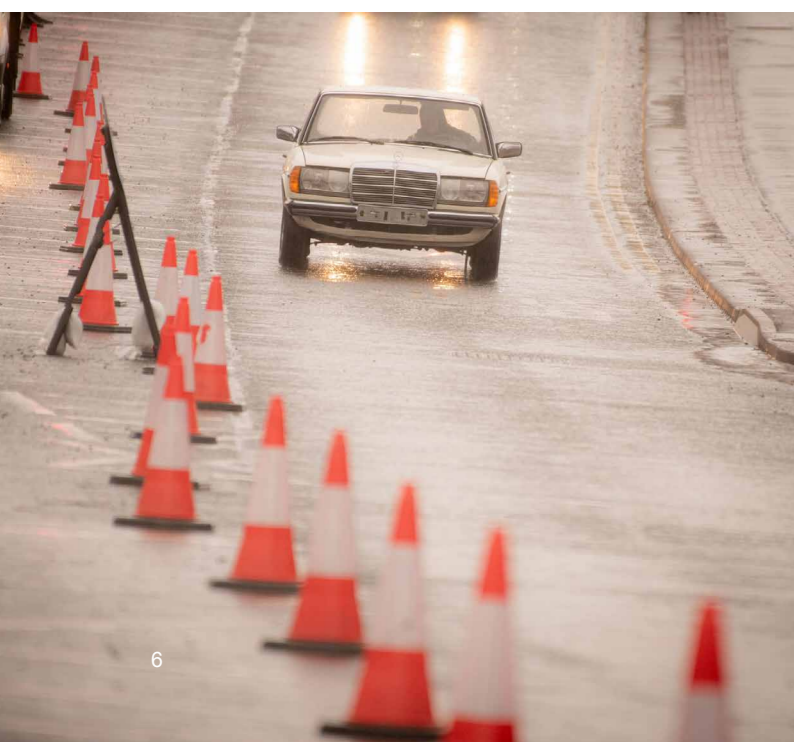
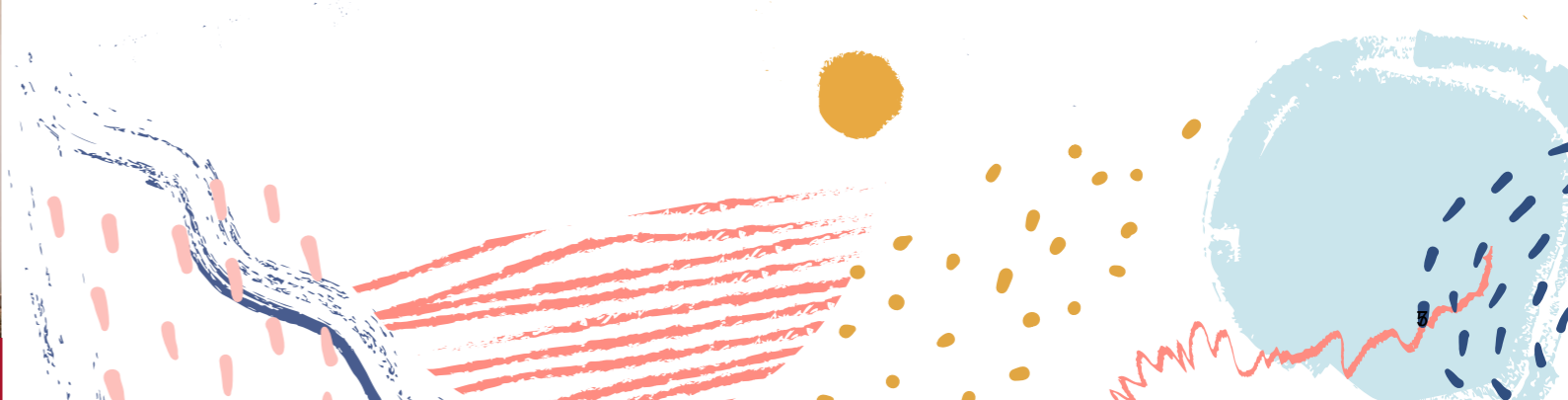
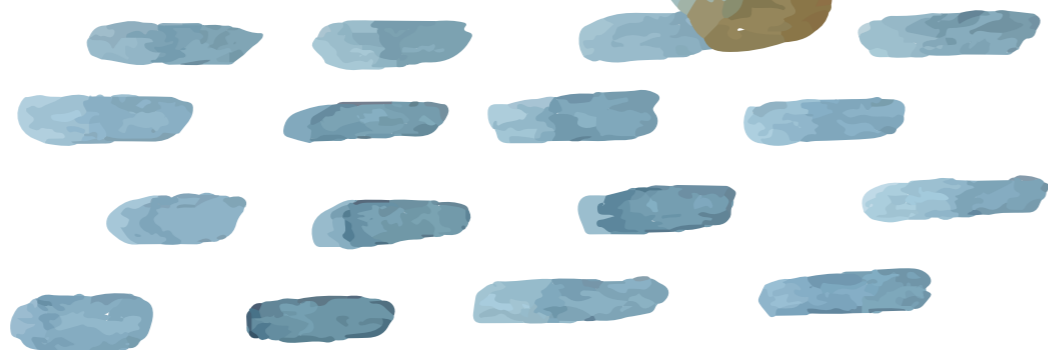
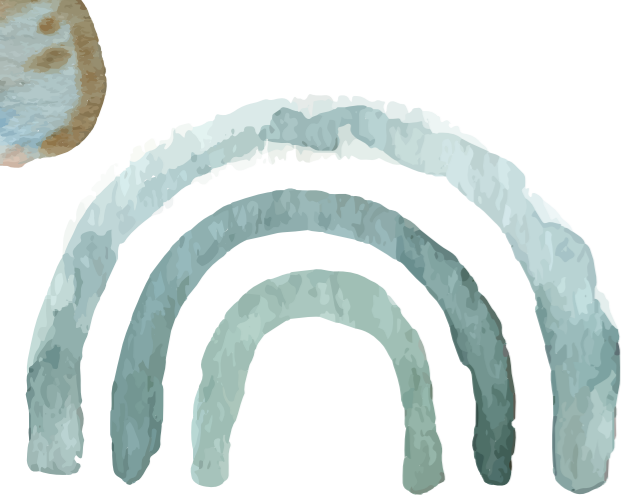


Image Credit: Erskine Logan







# TILLYDRONE GATEWAY FEATURE YOU SPOKE, WE LISTENED!

**In the depths of winter in 2018, a group was established to take forward a proposal for a Tillydrone gateway feature, suggested during consultation to address community concerns of increased traffic speed and volume due to the newly built Diamond Bridge. The idea is that a point of interest, through a roadside sculpture next to the bridge, will signal to drivers that they are entering a community and not just a drive-through to get from A to B.**

This could have been a 'Welcome to Tillydrone' sign, but it was felt that a high quality, aspirational piece of public art celebrating the people, heritage and natural environment could fulfil this function, as well as being something that would raise the profile of the Tillydrone community and be something our fellow Tillydroners would be proud of.

It is important to the Gateway Feature Project Team that the artwork reflects the local area. Tillydrone is a diverse community, with a wide variety of wildlife in the natural environment, and the industrial heritage of the former papermills nearby. The location of

the artwork is on a Sustrans National Cycle Network route so provides easy access for cyclists, and there are paths and walking routes along the River Don. We hope the artwork will encourage people from Tillydrone and outwith to visit, view the sculpture, and take advantage of the beautiful surrounding scenery.

Following many meetings, research, information gathering trips, discussions with planners and some successful fundraising, we were able to create an artist's brief to allow us to select four artists to undertake public consultation and develop proposals. Engagement events took place with young people, older people and residents. Sessions took place at Riverbank Primary School, St Machar Academy, Meadow Court, Tillydrone Community Flat and Tillydrone Community Campus. As well as models and drawings, the events led to some interesting conversations about the area and the ideas behind the project.

Following the engagement events, the four artists worked up their ideas and community consultation was planned for April 2020. The maquettes and designs were to be

on display in the Tillydrone Campus for a week, with opportunities to meet the artists and an opening event with the local community invited. Then, of course, Covid-19 hit, and the project had to be postponed. After a year, and with restrictions beginning to lift, we decided to proceed, though using online consultation instead of public events. We realise this has been a difficult year for people and these are challenging times, but Tillydrone is a resilient community, and we want to be able to celebrate that.

We set up a Facebook page, [www.facebook.com/TillydroneGatewayFeature](http://www.facebook.com/TillydroneGatewayFeature) to show people the four proposals and include the artists in the discussion. A survey was opened to gather public opinion and help the selection panel decide which design would be progressed to installation. Over 300 people responded to the survey, and it was fantastic to see that there was an enormous amount of support for the idea of having an iconic piece of public art in the area.

While all the proposals had their fans, and all the sculptures got really positive feedback, the public was overwhelmingly in favour of David Annand's swans.

David said: "Wm. Soutar, the Perth poet, wrote in his diary on 9th August 1932

*'Until the interest of an artist shifts from the personal sensation to a sense of communal service his work cannot grow. As pure artist his work may be technically more perfect in the exploitation of the ego - but it cannot take on real greatness until it bears the burden of a people.'*

*"I have applied this to all the commissions for public art that I go for. The Tillydrone Gateway Feature Project Team have also pinched my mantra and I'm delighted!*

*"The community involvement in this commission has been the best I have seen because the project team are truly motivated and above all really care about Tillydrone.*

*"Many thanks to all who supported my concept. I am really humbled and truly honoured."*

Sean McVeigh, a member of the project team said: *"The swans are bold, eye-catching and have a huge wow-factor. I think that's what swung it for the voters, they are going to look incredible.*

*"It was really important to us that the sculpture fitted the heritage and history of Tillydrone and the swans match that well. Of course, we have the family of swans who live beside the river, but the fact these swans are origami also gives a nod to the papermills the area was famous for.*

*"Art and culture are so necessary to help regenerate areas, Eradicating poverty isn't just about putting money in someone's pocket, it's about the conditions that you live in, where you live, your pride in the community, the ownership you feel and the sense of responsibility you have for your neighbourhood."*

The next steps involve the Project Team and David working out the finer details of the sculpture before applying for planning permission from the Council. Then comes the task of finding funding to install the piece of art. However, the team have already been putting out feelers and are confident that funding will be forthcoming. We may also consider crowdfunding as some people indicated they would like to contribute. If so, they would

be making a wee bit of history and a lasting legacy for our community happen.

It's been a long journey, with an unexpected pandemic in the middle of it, but we are delighted that our friends and neighbours have embraced the idea of public art in Tillydrone with such enthusiasm. It is now literally a case of 'watch this space' down at the Diamond Bridge!

We'd like to take this opportunity to thank everyone who completed the survey or commented on the Facebook page, Hamish Cattenach and Margaret Stewart from Aberdeen City Council, who supported the process, and Sustrans, ArtUK and ACC Creative Funding who provided funding for the first phase of the project.

## Tillydrone Gateway Feature Project Team

**For more information please contact [tillydronegateway@hotmail.com](mailto:tillydronegateway@hotmail.com).**







# UDECIDE IN ST MACHAR

The concept of Participatory Budgeting is well known in the St Machar area of the city and has been done for the past few years to help local people decide how money should be spent in their community. This year the event had to be take place virtually and successful projects were awarded funding:

### Help is All Around

Since March 2020 the Woodside Junior Club has had to be closed. A lot of the kids enjoyed their club as it was their way of getting out after school in a safe surrounding. Since lockdown children have been indoors a lot more and folk are finding it harder as food bills go up, along with gas and electric. People on low incomes are struggling more and on top of that there are issues with people losing their jobs. The team at Woodside Junior Club have tried as

much as they can to help people and have been signposting people who need help and they can now help more by providing food vouchers, money for gas and electric, phone top ups etc.

### We Play

Printfield Community Project are going to be supporting children aged between one and two who don't have access to nursery by providing weekly play sessions. These play sessions will encourage development, improve social skills, build emotional confidence, encourage physical activity, support learning and creativity through play. Sessions will include outdoor play, planting and growing, messy play, dance, arts and crafts. Children will benefit from a positive and stimulating environment, social interaction, encouragement, support

to meet important milestones, a smoother transition on to nursery.

Jim Duncan from the Printfield Community Project said: "Thanks to the UDecide funding the community project will be able to support children from the area to benefit from a comfortable and caring environment which will support them through important milestones as they grow up. We hope to do is encourage friendly interaction between the children while working closely with their parents and carers to develop social skills."

### Fit Like Benches

While most people have relied on being outside and spending time in their garden during the Coronavirus pandemic, a significant number of people in Tillydrone live in flats with no access to their own outdoor space which can lead to isolation and health

issues. Fran and her daughter had a walkabout in the community and her daughter suggested that there should be picnic benches in the green spaces in Tillydrone for people to use and enjoy the outdoors. There is a separate article with more information further on in the magazine.

### Storehouse Foodbank Hub

Catalyst Vineyard Church have experienced an increased demand for support from their Storehouse Foodbank due to Covid. The group has secured premises in the St Machar area which will help support those in the area who need help with food, clothes and household products.

Kendall Thow from Catalyst Vineyard church said: "It means that we can top up our food reserves. We rely on donations from the public but sometimes these donations can dip as people's situations change. It is vital that we always have food on hand for the hundreds of people who need it so having a bit of a reserve is always so helpful.

*"We would also love to extend that support to include referrals to our free*

*debt help service through our CAP debt centre, parish nursing services, and befriending services. Our hope is that this Storehouse Hub would become a meeting place (when regulations allow) for many of the services that we supply already, like drop-ins, and be a great community resource."*

### Earth and Worms

The group want to alleviate food poverty while providing a safe space to help people with their mental health. The project started in March 2020 and has developed from an idea to a place where we can utilise waste and produce food. We use natural solutions to sustain our growth with worms playing an important role here by producing a highly nutritious fertiliser for the plants we grow. This and other elements bring other people into the space to learn about natural ecosystems and more. The team wish to use the funding to put up a polytunnel in a bright and sunny area of the site creating enough room for everyone involved to sew, plant and harvest fruit and vegetables. The polytunnel increases the growing season and

improves crop yields which would mean we could provide fresh and local food to community venues like the flat and the campus for individuals to pick up.

### Aberdeen Lads Club Little Learners and After School Club

Due to the Coronavirus pandemic, Aberdeen Lads Club has had to ensure the children who attend their nursery and after school club play outside no matter what the weather is doing. To be able to ensure they can stay safe and dry while playing outside they want to purchase all weather suits in order to make sure that the children stay safe and dry while enjoying outdoor experiences. The funding for the suits will ensure the children and young people have suitable clothing without adding any more financial burden to the families. They also want to put up some screening in order to protect the nursery children from some of the harsher weather and to ensure more privacy for the nursery.





# UDECIDE IN ST MACHAR

## Fit Like Benches

The Fit Like Benches project was awarded funding as part of the recent U-Decide Participatory Budgeting scheme in St Machar.

Fran and her daughter wanted to create a way that people could enjoy outdoor spaces in Tillydrone even if they didn't have access to their own garden.

Sets of two benches will be installed in the community so while we still need to be socially distanced we can become socially connected. There are five proposed sites for the benches and the community will then be asked to vote for where they would like the benches to go.

### Proposed bench locations include:

**St Machar Park**

**Green space between Formartine Road and Coningham Gardens**

**In between the high rise buildings**

**Tillydrone Play Park at Gordon's Mills Road**

**Between Alexander Drive and Dill Road**

There is a survey for local people to fill in to vote for their favoured locations. You can vote by visiting [www.tinyurl.com/4hnmb4tf](http://www.tinyurl.com/4hnmb4tf)



## Multistorey Facebook pages show more residents interaction

With social media being more popular than ever residents in and around the multi-storeys across Aberdeen now have a group page for their building set up on Facebook.

These pages are aimed at residents so they can get to know each other, inform others of issues within their buildings, advertise unwanted items to anyone who may like to acquire them, inform others of repairs that have been reported to Aberdeen Council and getting involved with the local community groups, community councils and tenant/residents groups within their community.

With social distancing still around and most meetings being held online councillors are also encouraged to join these pages as this gives them the chance to engage with and help tenants, also tenant and residents groups for the buildings.

Having these pages set up we can hopefully highlight the positives and negatives for living in these buildings, we do hope more positive posts can be seen in the future.

We would love to see residents show some pride in their

buildings, whether that means setting up a group of gardeners to setup a nice outdoor space for everyone to enjoy, or even having a function for residents in their common rooms in the future. Now is the time to show what you enjoy about living in your building.

Pages have been setup on Facebook for:

**Donside Court Residents**

**Elphinstone Court Residents**

**Grandholm Court Residents**

**Kings Court Residents**

**St. Machar Court Residents**

**Tillydrone Court Residents**

The Citywide Multistorey Group meets on the last Wednesday of the month. Meetings are held through Microsoft Teams. If you would like to find out more about this or how to set up a resident's group for your multi-storey building. Please get in touch with Carol Hannaford (Tenant Participation Officer) at: [channaford@aberdeencity.gov.uk](mailto:channaford@aberdeencity.gov.uk) for more information.

## Warmer Homes Scotland scheme gets funding boost to help green recovery

The Warmer Homes Scotland scheme is open and helping Scots who are struggling with energy bills. The Scottish Government has increased funding for the scheme to help support a 'green recovery' from the coronavirus pandemic and help tackle fuel poverty in Scotland.

Over 22,000 Scottish households have already benefitted since the scheme launched in 2015. They've had help to fund energy saving home improvements like new heating systems, wall and loft insulation, draught-proofing and even home renewables. After support from Warmer Homes Scotland, homes are on average 20% more energy efficient, with households saving an average £300 per year on their energy bills.

To find out more call Home Energy Scotland on 0808 808 2282. They're open Monday – Friday 8am – 8pm and Saturday 9am – 5pm or go online -[www.homeenergyscotland.org/warmer-winter](http://www.homeenergyscotland.org/warmer-winter)



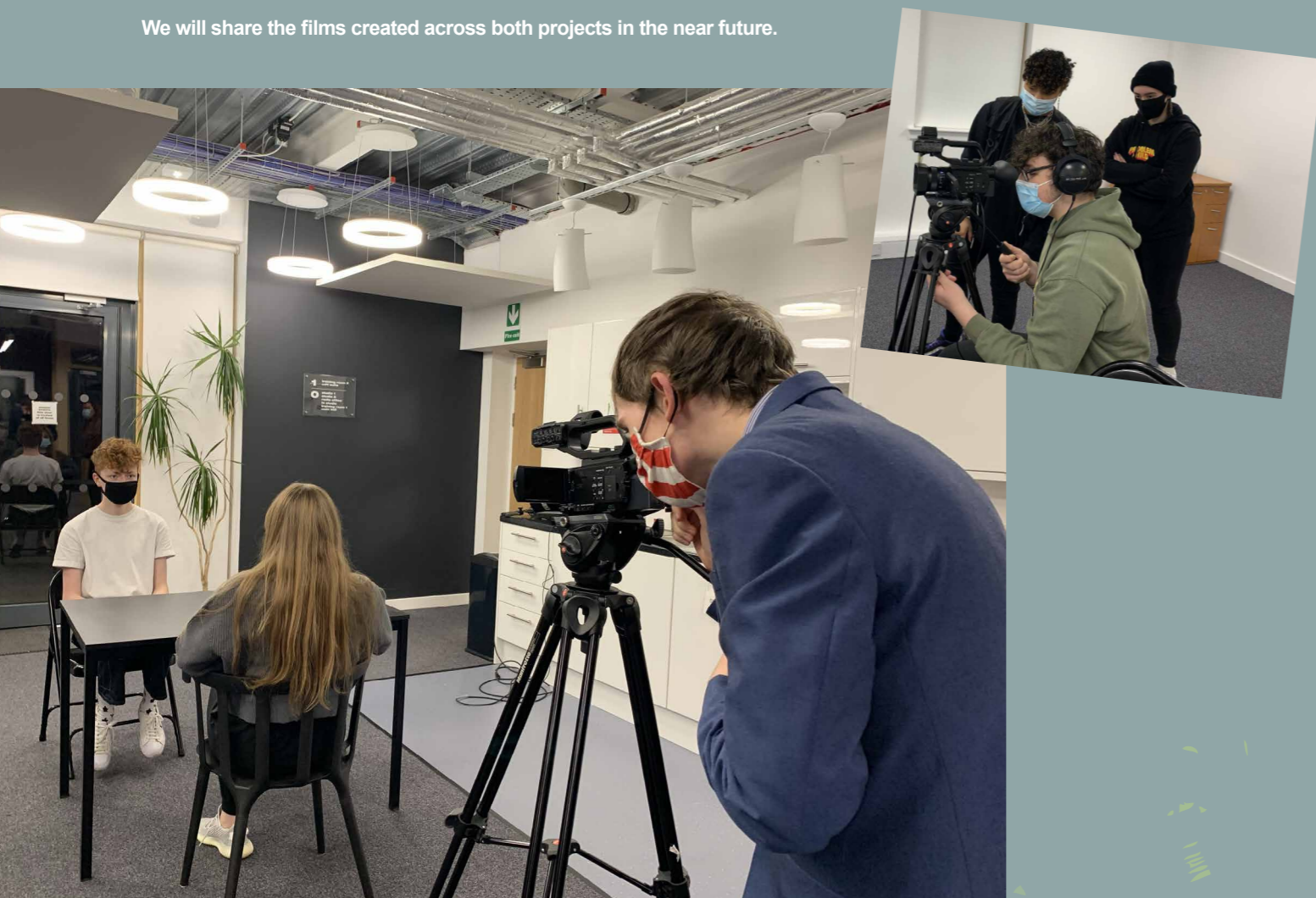
## Focus on Film

Both the BFI Film Academy and the Moving Image Arts courses have been fairly busy over the last few weeks as the projects come to a conclusion.

BFI Film Academy, like all other programmes, has been affected by Covid 19 restrictions. When the programme started in October we were in a position to offer face to face delivery. We had a 20 strong cohort taking part in socially distanced workshops at NESCoI and here in shmu. Two scripts were developed and were ready to go into production when the second lockdown hit so filming plans had to be shelved. Participants remained engaged though and attended weekly online sessions where they had the chance meet Scottish filmmakers Duncan Cowles and Raisah Ahmed, and they were supported through lockdown to work individually on short personal films on the theme of discovery. The original scripted films will still be shot when it is safe to do so.

The Moving Image Arts group are reaching the end of the course and are busy putting the finishing touches to their portfolios and generating evidence for their final mark. Again, it has been particularly challenging for participants to create films individually and under tight Covid restrictions. These restraints however, have led to much creative problem-solving as the young filmmakers adapted their ideas to ensure films could be made under the restrictions. A new skill that will serve them well as future filmmakers.

We will share the films created across both projects in the near future.



# Aberdeen Market

ALAN JOHNSTONE

**The future of Aberdeen's New Market and BHS building has been in the news again recently. The New Market was first opened in 1842, but suffered a major fire 40 years later, having to be substantially rebuilt. It was re-opened in 1883, hence the word "New," and demolished and re-built again in the early 1970s. This photograph shows the New Market in 1884, courtesy of The Silver City Vault. The Aberdeen Evening Express describes what awaited Aberdeen's citizens when the doors were opened for business on 4th May 1883.**

"The New Market in its new form will more than ever maintain its reputation as being not only one of the sights the city, but the most elegant building of its kind in the country. Contrasted with the appearance of the market as it existed before the fire, the restored interior gives one the impression that the height of the building has been materially increased. No change has, however, been made in this respect, the side walls and the pitch of the roof remaining as formerly. But the loftiness of effect is due, in great part, to the omission of the heavy-looking beam which previously encircled the building horizontally at the level of the springing of the arches between the piers of the nave, the arches being now opened to their whole height.

The whole Market is now abundantly lighted by means of continuous roof-lights, eight feet broad, encircling the building, one

above the gallery passage, and the other on the roof over the hall. The new roof is of iron construction, and as seen in perspective, has a very light and pleasing effect. The iron rafters, tie-rods, and struts, etc are painted a pale blue, the connecting plates and the purlins red, and the wood sarking a warm buff colour. The brick piers have been finished with impost mouldings, or capitals, the arches between them have moulded archivolt, and a cornice moulding encircles the hall at the top of the side walls. The floors nearly throughout have been finished with concrete and Portland cement - the old stone pavement having been so much destroyed by the fire that little of it was fit for use again.

The butcher's shops show a great improvement on the old ones. The walls, to the height of about three feet above the table tops, have been lined with white enamelled tiles, having a neat ornamental border and moulding on the top, the walls above being finished in parian cement. Each shop is provided with a massive counter in front, with a birch top, and has ample table and other accommodation inside, and a full complement of polished steel bars and iron hooks. A lavatory basin is also provided for every shop. The shop fronts are enclosed above the counters with revolving wooden shutters, the rollers of which are encased in wood, forming a continuous entablature, and are supported by strong cast-iron uprights, lined with wood, so as to form pilasters, having handsome truss blocks at the top.

The seats and tables for the butter and egg sellers are fitted up in the west end of the market behind the stair from the basement, instead of in the east end as formerly. The seats are supported on hinged folding brackets, so that when not in use they can be folded up against the piers: and the tables, which have folding legs, can be placed under the seats - the whole thus forming a handsome panelled dado round the west end of the hall. The gardeners' benches are similar to the old, and are ranged along the centre and sides of the hall from the Market Street entrance to near the fountain. The gallery front, which was formerly occupied by advertising boards, is now formed with panelled wood framing between the piers, surmounted by ornamental perforated boarding. The gallery shops and toy stands are arranged very much as they were before, but have been greatly improved in appearance and convenience. The large shop at east gallery is surmounted by the burgh coat of arms, which we described the other day. The whole of the woodwork throughout is stained and varnished. A fountain of polished Peterhead granite, a replica of the one destroyed, has been placed in the old position. Two handsome circular pedestals of polished Peterhead granite have been erected at the top of the stair from basement floor, and are surmounted with iron gas standards.



# Community Contacts

Aberdeen City Council Helpline - 0800 0304 713

## ALCOHOL

Alcoholics Anonymous - 0800 9177 650

Drinkline - 0300 123 1110

## CRIME

Crimestoppers - 0800 555 111

## DRUGS

Alcohol and Drugs Action Helpline

01224 594700 or 07927192706

Narcotics Anonymous

0300 999 1212

## DENTIST

Emergency - G-Dens - 111

## DOCTORS

NHS 24 Emergency - 111

## POLICE

Non-Emergency - 101

## ELECTRICITY

If you have a power-cut - 105

## GAS

Gas Emergency - 0800 111 999

## WATER

Scottish Water Emergency - 0800 0778 778

## HOUSING

Emergency Repairs - 03000 200 292

Family Planning - 0345 337 9900

Mental Health Aberdeen - 01224 573892

Breathing Space - 0800 838 587

Samaritans - Need to talk

01224 574 488 or 116 123

## SOCIAL WORK

Adult Protection - 0800 731 5520

Joint Child Protection Team

01224 306877 or 0800 731 5520

Aberdeen City Carers Service - 01224 914036

Age Scotland - 0800 1244 222

**CFINE** 01224 596156

Financial Advice at **CFINE** 01224 531386

Pathways 01224 682 939

Citizens Advice 01224 586255

St Machar Credit Union 01224 276994

**Oldmachar Medical Practice**

0345-337-0510

**Old Aberdeen Medical Practice**

01224 486702

**Tillydrone Clinic**

01224 276723

**Tillydrone Library**

01224 489539

**Woodside Medical Group**

01224 492828

## LOCAL COUNCILLORS:

**Councillor Alex McLellan**

07500 999522

amclellan@aberdeencity.gov.uk

**Councillor Jim Noble**

07748 760557

jimnoble@aberdeencity.gov.uk

**Councillor Ross Grant**

07738688458

rossgrant@aberdeencity.gov.uk

## DOMESTIC ABUSE SUPPORT

Domestic Abuse is not acceptable. It is not your fault and you are not alone. Domestic Abuse is when you are hurt, bullied or frightened by:

Your husband or wife. Your boyfriend or girlfriend  
Your current or ex-partner

Their behaviour can be; controlling, physical, sexual, financial or emotional.

## Help and support

There are services available to support you, and they are still open. You do not have to wait for an emergency to get help. Tell someone you trust or contact:

**National Domestic Abuse Helpline Free** and confidential advice. Open to all. 24 hours a day. Telephone: 0800 027 1234. Website: [sdfmh.org.uk](http://sdfmh.org.uk)

**Grampian Women's Aid**

Telephone: 01224 593381. Website: [grampian-womens-aid.com](http://grampian-womens-aid.com)

**Rape Crisis Grampian** Telephone: 01224 590932.

Website: [rapecrisisgrampian.co.uk](http://rapecrisisgrampian.co.uk)

**LGBT Domestic Abuse Helpline**

Telephone: 0300 999 5428 or email [info@galop.org.uk](mailto:info@galop.org.uk)

**Men's Advice Line**

Telephone: 0808 801 0327